

REVIEW

Open Access

Diffusion-weighted imaging and dynamic contrast-enhanced MRI in assessing response and recurrent disease in gynaecological malignancies

Ayshea Hameeduddin and Anju Sahdev*

Abstract

Magnetic resonance imaging (MRI) has an established role in imaging pelvic gynaecological malignancies. It is routinely used in staging endometrial and cervical cancer, characterizing adnexal masses, selecting optimal treatment, monitoring treatment and detecting recurrent disease. MRI has also been shown to have an excellent performance and an evolving role in surveillance of patients after chemoradiotherapy in cervical cancer, post-trachelectomy, detecting early recurrence and planning exenterative surgery in isolated central recurrences in both cervical and endometrial cancer and in young patients on surveillance for medically managed endometrial cancer. However, conventional MRI still has limitations when the morphological appearance of early recurrent or residual disease overlaps with normal pelvic anatomy or treatment effects in the pelvis. In particular, after chemoradiotherapy for cervical cancer, distinguishing between radiotherapy changes and residual or early recurrent disease within the cervix or the vaginal vault can be challenging on conventional MRI alone. Therefore, there is an emerging need for functional imaging to overcome these limitations. The purpose of this paper is to discuss the emerging functional MRI techniques and their applications in predicting treatment response, detecting residual disease and early recurrent disease to optimize the treatment options available using diffusion-weighted imaging and dynamic contrast enhancement particularly in cervical and endometrial cancer.

Keywords: Adnexal, Functional MRI, Diffusion weighted imaging, Dynamic contrast enhancement, Cervical carcinoma, Endometrial carcinoma, Ovarian carcinoma

Introduction

MRI has a pivotal and established role in detection and staging of gynaecological malignancy. The exquisite soft tissue resolution of MRI allows accurate demonstration of tumour size, location, extension and nodal involvement. Despite excellent clinical utilisation to date, conventional T1 and T2 sequences cannot provide information about tumour microenvironment and have limitations in assessing response of tumours to therapy and in particular, differentiating residual or recurrent disease from post-treatment fibrosis due to overlap of morphological appearances [1]. This latter distinction is crucial in selecting patients who may benefit from further salvage treatment options.

Functional MRI has evolved over recent years with the development of stronger field strengths, receiver coils and pulse sequences and has proven benefit in cerebral, breast and rectal cancers [2]. The clinical utilisation of functional MRI in gynaecological malignancy is not yet established. There is however an emerging body of evidence to support its use in the assessment of tumour response to therapy with promising results to date, particularly in cervical cancer.

As we learn more about tumour heterogeneity and develop sophisticated therapeutic options, the need for an imaging biomarker is essential to improve patient care and ultimately long-term survival.

Review

Clinical need for functional imaging techniques

Cervical cancer is the leading gynaecological cancer worldwide and a significant proportion of patients will develop

* Correspondence: anju.sahdev@bartshealth.nhs.uk
Imaging Department, St. Bartholomew's Hospital, Barts Health, West Smithfield, London, UK

recurrent disease (30%) with a 64% 5 year survival rate [3]. Organ confined FIGO stage 1a/1b disease is treated surgically and locally advanced disease is treated by chemoradiation. Imaging within three months of therapy is particularly challenging to interpret following radiotherapy as the tumour microenvironment is affected by hypoxia, granulation tissue and oedema and both residual disease and radiation fibrosis show increased T2 signal intensity [4] (see Figures 1 and 2). In this setting MRI is limited by false positive results, as demonstrated by Vincens et al, who correlated end of treatment MRI results with histopathological findings in patients with cervical cancer and found a sensitivity and specificity of 80% and 55% respectively for the detection of residual disease [5]. Developing an imaging biomarker that can pre-empt poor response to radiotherapy and detect residual disease and early recurrence with good accuracy would have profound prognostic implications.

The standard of care in early endometrial carcinoma is surgery with good outcomes owing to the early stage of presentation (80% of endometrial cancers are stage 1) [6]. However its incidence continues to rise with a 40% increase in the UK since 1993 [7]. The overall risk of recurrence is published at 13% and commonly occurs at the vaginal vault and pelvic lymph nodes but as there is a lack of consensus over optimal surveillance methods and patients may be asymptomatic, detection of recurrence can be challenging [8]. A reproducible biomarker to select those patients at risk of recurrence would similarly have great clinical impact.

Following endometrial cancer, ovarian cancer is the second most common gynaecological malignancy associated

with high mortality rates due to late presentation [9]. Stage III disease is associated with a 5 year survival of 32-47% and following chemotherapy, relapse rates are high with a median progression free survival of 18 months [10]. 18 F-FDG PET/CT is the mainstay of imaging patients with suspected recurrence and performs better than CT and MRI and is particularly useful in detecting patients with irresectable disease [11]. MRI and CT perform less well than in primary staging due to the microscopic nature of peritoneal seeding and distortion of anatomy in the post-surgical state [12].

Results from the MRC OV05/EORTC 55955 trial concluded a lack of survival benefit in asymptomatic patients with biochemical relapse [13], however it remains important to develop imaging techniques to enable selection of symptomatic patients with early recurrence who may benefit from secondary cytoreduction which is associated with an increase in median survival [14].

Functional imaging techniques

Changes in tumour microenvironment at a molecular level are known to precede morphological changes demonstrated on conventional MRI [15]. Dynamic contrast enhanced (DCE) MRI and diffusion weighted imaging (DWI) sequences reflect changes in oxygenation, perfusion and tissue physiology of the tumour microstructure and yield quantitative and semi-quantitative parameters which can potentially be used as a biomarker of tumour characteristics [2,16,17].

The ability to predict which cancers may respond to primary treatment provides an opportunity to manipulate treatment pathways. This allows the clinicians to

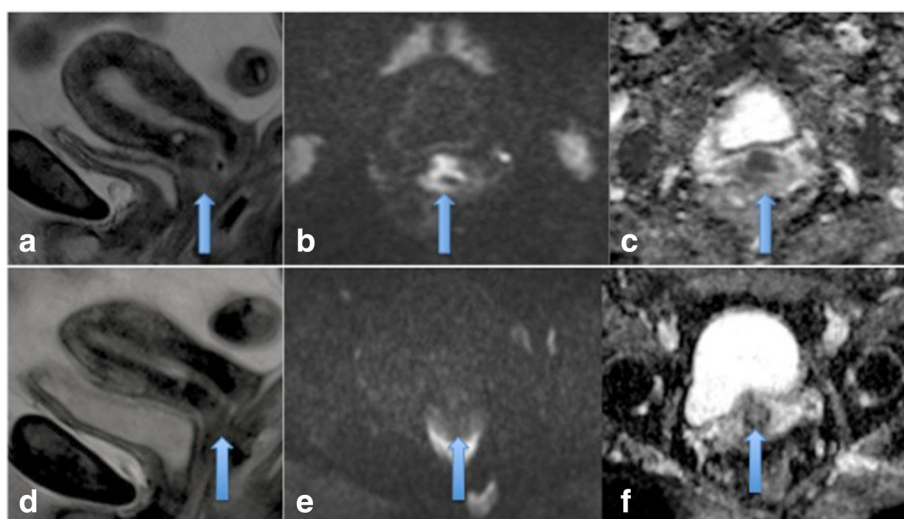


Figure 1 Residual or recurrent disease and post treatment complete response. Sagittal T2 image demonstrating an intermediate T2 signal intensity mass in the cervix which is either residual or recurrent disease (a), axial DWI images through the tumour showing restricted diffusion, high signal on b1200 image (b) and low signal on the corresponding ADC map (c). Post-treatment images (d-f) demonstrating no residual disease on T2 weighted sagittal images and axial DWI images.

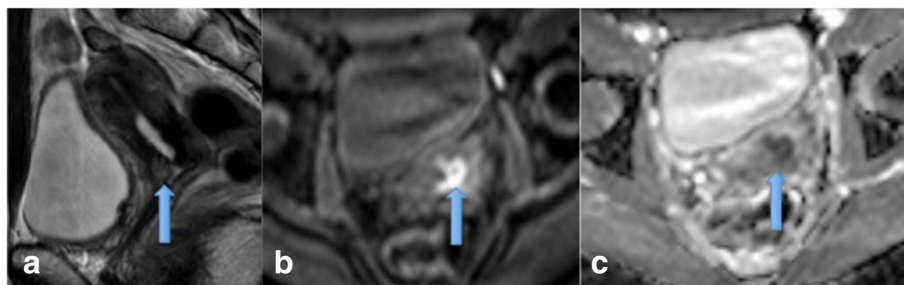


Figure 2 Residual cervical disease. Post treatment images showing a small area of residual disease in the anterior lip of the cervix on sagittal T2 MRI (a) and corresponding restricted diffusion (b and c).

individualise patient care limiting the use of unsuccessful treatment regimes with toxic side effects and high costs, whilst allowing other more suitable options to be instituted earlier [18]. The use of post therapy DCE-MRI in cervical and endometrial cancer may be able to predict which patients are at risk of early recurrence and therefore super select patients suitable for exenterative surgery.

DCE-MRI

DCE-MRI is a non-invasive technique which can assess tissue perfusion and oxygenation within the tumour microenvironment [19]. Abnormalities in tumour microvasculature and changes in perfusion can lead to hypoxia which is considered a major factor in response of tumour cells to radiation and in particular to radio-resistance [1,20]. The ability to evaluate the extent of hypoxia may be a useful predictive tool in identifying which patients may benefit from additional or more aggressive therapies.

Direct measurement of oxygenation of the tumour microenvironment is invasive, subject to sampling errors and several techniques have not been fully validated [21]. Imaging attention has been centred towards further evaluating DCE-MRI as a predictive perfusion biomarker. The ability to use routine gadolinium based contrast agents, most commercially available MRI scanners and analysis software allows DCE-MRI to be widely accessible. Moreover, the additional sequences are short adding only 10 minutes of scan time which is well tolerated by patients.

DCE-MRI involves intravenous injection of standard low-molecular weight paramagnetic intravascular contrast agents (typically gadolinium diethylene-triamine penta-acetic acid), either as a fast bolus pump injection or constant infusion. Serial image acquisitions are performed every few seconds over a length of a few minutes, the exact protocols and the region of interest depending on the tumour type being imaged.

The contrast agent reduces T1 longitudinal relaxation time of blood which increases signal intensity (SI) enhancement, of vascular structures on T1 imaging. When microcirculation of tumours is disrupted with angiogenesis

and leaky capillary membranes, there is rapid accumulation of contrast agents and subsequent enhancement of tissues that is greater than that of similar normal tissue [2].

Semi-quantitative analysis

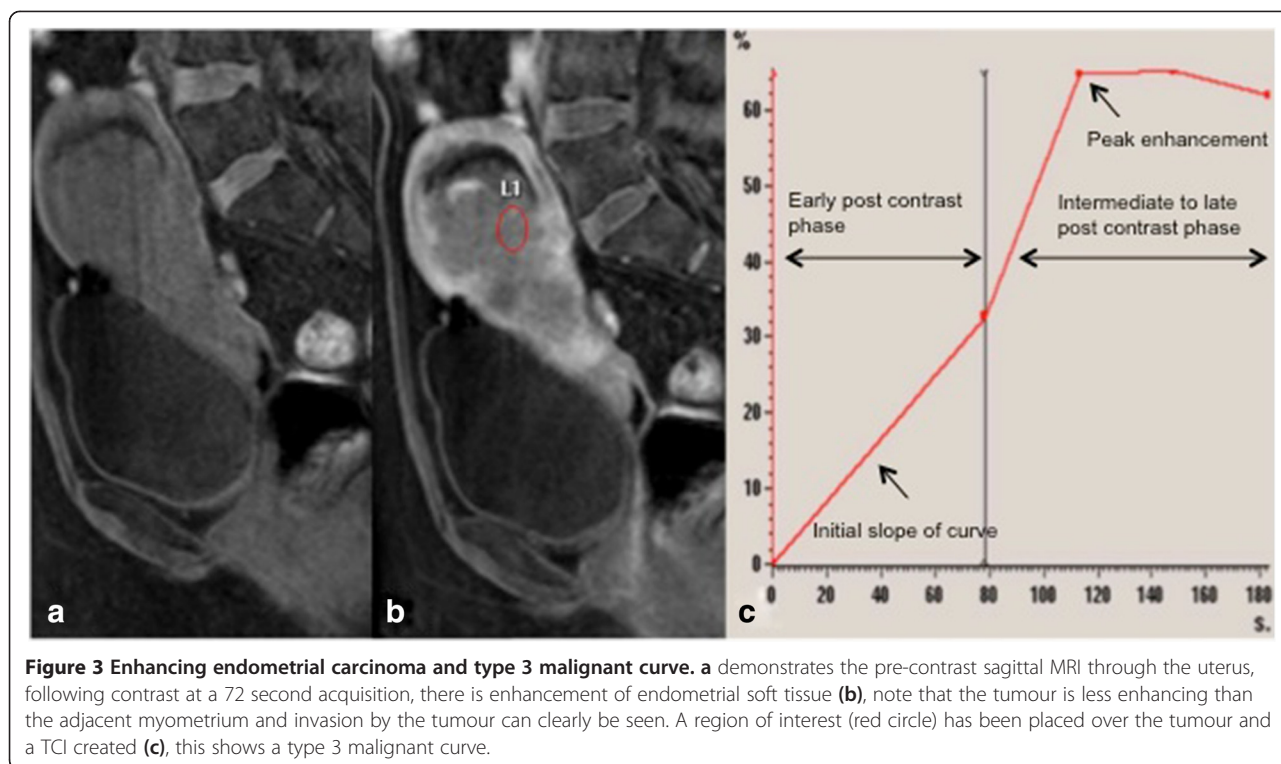
DCE indirectly evaluates distribution of contrast by measuring tissue enhancement over time. The SI values are recorded before, during and after contrast administration and a dynamic time-signal intensity (TSI) curve is generated using a fixed region of interest (ROI) within the organ imaged (Figure 3).

The data that is commonly extracted from TSI curves includes: time to onset of enhancement, relative signal intensity (RSI), ratio of the maximum post-contrast SI to the pre-contrast SI which is a measure of the degree of enhancement, initial slope of the curve which is a measure of rate of enhancement and area under the curve which represents overall enhancement [22].

Table 1 summaries the adnexal, cervical and endometrial protocols used in the authors' institution for both DCE and DWI-MRI for semi-quantitative analysis (Table 1).

Quantitative analysis

Whilst clinical evaluation can be obtained from semi-quantitative analysis, the data is not readily transferable between scanners and measurements are not an accurate assessment of the amount of contrast within the ROI [19]. To overcome these shortfalls, quantitative analysis is required. To perform quantitative analysis concentration of contrast is calculated within a ROI, deduced from analysing properties of T1 relaxation times pre and post-contrast. The National Cancer Institute has recommended that quantitative measurements, such as Ktrans (volume transfer constant between the plasma and the extracellular extravascular space) and IAUGC (the initial area under the gadolinium concentration–time curve), should be used as primary endpoints for DCE-MRI studies [23]. However quantitative analysis requires extensive support from dedicated MRI physicists and is labour intensive. Consequently, this has led to mainly the use of semi-quantitative DCE in clinical practice.



DWI-MRI

Functional imaging with DWI is a non-invasive technique which generates tissue contrast from differences in mobility of water molecules that occurs during an MR pulse sequence [17]. Information regarding the integrity of cellular membranes and tissue cellularity can be obtained [17,24]. Excellent contrast-to-noise ratio is achieved based on differences in cellularity between tumours, which usually return high signal, and normal tissue, which usually returns low signal. The signal intensity in DWI is derived from the intensity of MR pulse sequence, represented by a b-value. B- values are increased incrementally from low to high, typically ranging from 0-1200s/mm². As the B-values increase, this increases the SI from tissues with high cellularity and hence the conspicuity and detection of disease is increased with suppression of bowel and background tissue, however this is at the expense of signal-to-noise ratio. High b-values between 800-1200s/mm²

are preferred for imaging the female pelvis to eliminate affects of T2 shine through from cysts, bladder and bowel [24,25].

Quantitative assessment of the tumour microenvironment can be derived from the apparent coefficient diffusion (ADC) which is generated from combining serial b-values [26]. Hence, DWI can be used to assess changes in tumour cellularity over time in response to treatment [16]. Acquisition of DWI and generation of ADC maps is simple, fast, and does not require intravenous contrast agents. ADC is a reproducible physical constant with advantageous features of a potential biomarker. ADC is exquisitely sensitive to changes in the water environment, therefore ADC values are affected by several factors from the hardware (scanner type and field strength) to the type of sequences used for example breath-hold, respiratory triggered or free-breathing [27]. These factors must be considered when interpreting changes in ADC values to ensure they are not the result of measurement

Table 1 Adnexal, cervical and endometrial MRI protocols for DWI and DCE-MRI at the authors institution

Sequence	Plane	FOV	Slice	Gap	Matrix	NSA
DWI 2b-values (0,1200)	Axial	400	5	1	112 × 256	3
DWI 3b-values (0,300,600)	Axial (sagittal optional for endometrial cancer)	340	6	1	112 × 256	3
T1 fat sat	Adnexal:Axial oblique	280	4		224 × 256	8
DCE 5 scans 36secs each						
Scan time 3 mins	Cervical and endometrial: Sagittal	280	4		208 × 256	6

error and reflect actual changes to the tumour [28]. Therefore in clinical practice and clinical trials the variability of ADC measurements should be minimised by standardization of b values, standardising imaging protocols and by consistent placement of serial ROI over time which is essential to ensure reproducibility of data.

There is great interest in use of ADC as a biomarker of early treatment response in several organs of the body, particularly breast, rectal and intracranial neoplasms with growing evidence in gynaecological malignancy, particularly cervical cancer [29,30].

Clinical application of Functional MRI

Cervical cancer

DCE-MRI as a predictor of radiotherapy response in cervical cancer

Several studies have shown pre-treatment DCE-MRI parameters of high relative SI or peak enhancement are associated with tumour regression and local tumour control [19,21,31]. High perfusion before and during radiotherapy suggests increased vascularity and high tumour oxygenation, both associated with better response to treatment and therefore better prognosis. Mayr et al demonstrated an increase in tumour perfusion or relative SI early during radiation therapy for cervical cancer suggesting improved oxygenation of previously hypoxic cells making radiotherapy more effective in these tumours. More recently, the same group performed a longitudinal study evaluating

perfusion at three time points throughout treatment in 98 patients, they found that if initial pre-therapy perfusion was low and subsequently changed to high perfusion early in therapy, a favourable outcome was obtained, but persistently low perfusion throughout treatment was associated with poor treatment response and poor prognosis [21,31] (see Figures 4 and 5). The definition of low perfusion varies between studies, Mayr et al analysed poorly perfused tumour subregions with voxel-by-voxel histogram analysis and quantified the areas as lower 10th percentile of the signal-intensity curve (SI10%) – this was the value below which the lowest 10% of all tumour voxels fell and which differentiated favourable from unfavourable outcomes [31]. Yuh et al found that SI percentiles ranging from SI5%-SI20% provided overall best prediction with the single best predictor for primary tumour control was SI5% at 2-2.5 weeks of therapy [32]. In the authors institution qualitative assessment is also used to assess perfusion with low perfusion taken to be tumour enhancement less than normal cervical tissue and high perfusion taken to be tumour enhancement greater than cervical tissue.

Table 2 summarises pre-therapy DCE-MRI studies in cervical cancer and their key outcomes.

Post-therapy DCE-MRI in predicting recurrence

At completion of therapy, persistent enhancement at the original cervical tumour site or in the post-surgical bed likely represents residual disease associated with increased

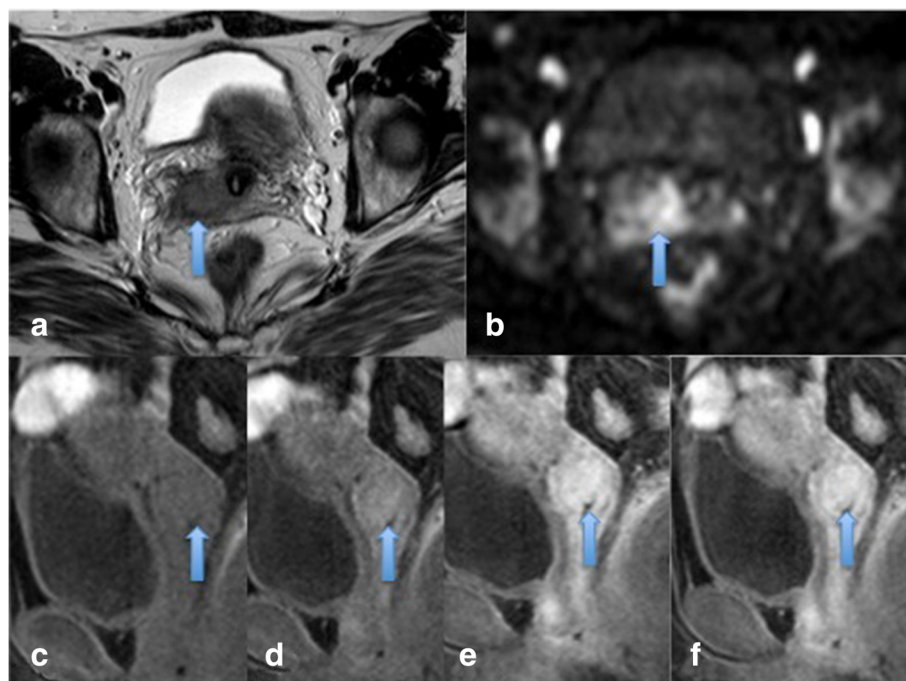


Figure 4 Cervical carcinoma showing restricted diffusion and enhancement. Axial T2 image showing a mass in the right lateral aspect of the cervix with parametrial invasion (a), the mass demonstrates restricted diffusion on high b-values (b) and marked enhancement on DCE imaging (images c-f), indicating the tumour should respond well to treatment.

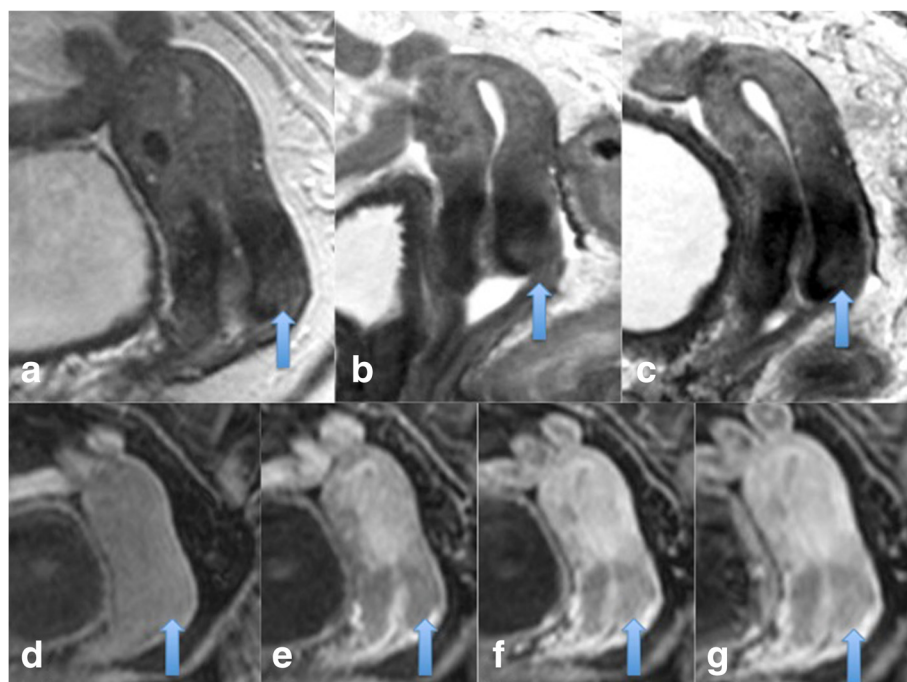


Figure 5 Poorly enhancing cervical tumour indicating poor response to treatment. Pre-treatment sagittal T2 MRI showing a tumour in the posterior cervical lip (a), at the end of treatment there is recurrent disease (b) and 6 months later residual disease is present (c). The pre-treatment DCE images are shown in figures d-g from pre-contrast to later contrast enhancement, minimal enhancement of the tumour is seen predicting the poor outcome to treatment observed.

risk of recurrence and poor survival. Post-therapy DCE-MRI can be used as a predictive tool to pre-empt or detect early residual disease and recurrences and thereby select patients suitable for exenterative surgery [18,34] (Figure 6).

In a small group of 10 patients with cervical cancer, Boss et al used a cut-off value of 6 seconds on the end of treatment DCE MRI to divide non-survivors and survivors. Early contrast enhancement of less than 6 seconds was associated with poor survival, but delayed contrast

Table 2 Pre-therapy DCE-MRI studies in cervical cancer and key outcomes

Authors	Number of patients	DCE-MRI parameters	Outcome
Mayr et al 2010 [31]	98	Semi-quantitative RSI throughout treatment	<ul style="list-style-type: none"> ● Persistent low perfusion associated with poor prognosis ● Low perfusion which converts to high perfusion during treatment associated with favourable response.
Zahra et al 2009 [19]	13	Semi-quantitative and quantitative. Assessed at 3 time points, pre treatment, after 2 weeks of EBRT and in the last week of EBRT	<ul style="list-style-type: none"> ● semi quantitative and quantitative DCE-MRI parameters correlate significantly with tumour regression at the end of EBRT. ● Tumors with early peak SI, steeper slope for the TSI curve, and higher values for CER, Ktrans, and kep had more significant tumor regression and response to therapy
Mayr et al 1996 [21]	17	Semi-quantitative pre treatment and at 2 weeks EBRT.	<ul style="list-style-type: none"> ● High pre-treatment SI and steeper slope on TSI curve correlated with lower incidence of local recurrence ● High perfusion early in therapy is a favourable prognostic factor.
Yuh et al 2009 [32]	101	Semi-quantitative volume and perfusion in MRIs at 3 time points	<ul style="list-style-type: none"> ● Tumor volume, mean SI, and SI% showed significant prediction of the long-term clinical outcome
Gong et al 1999 [33]	7	Semi-quantitative pre-treatment and at 2 weeks	<ul style="list-style-type: none"> ● Mean and peak enhancement correlated with tumour regression
Yamashita et al 2000 [1]	36	Semi-quantitative	<ul style="list-style-type: none"> ● Tumours with homogenous contrast enhancement correlated with good responders and poorly enhancing tumours with poor responders

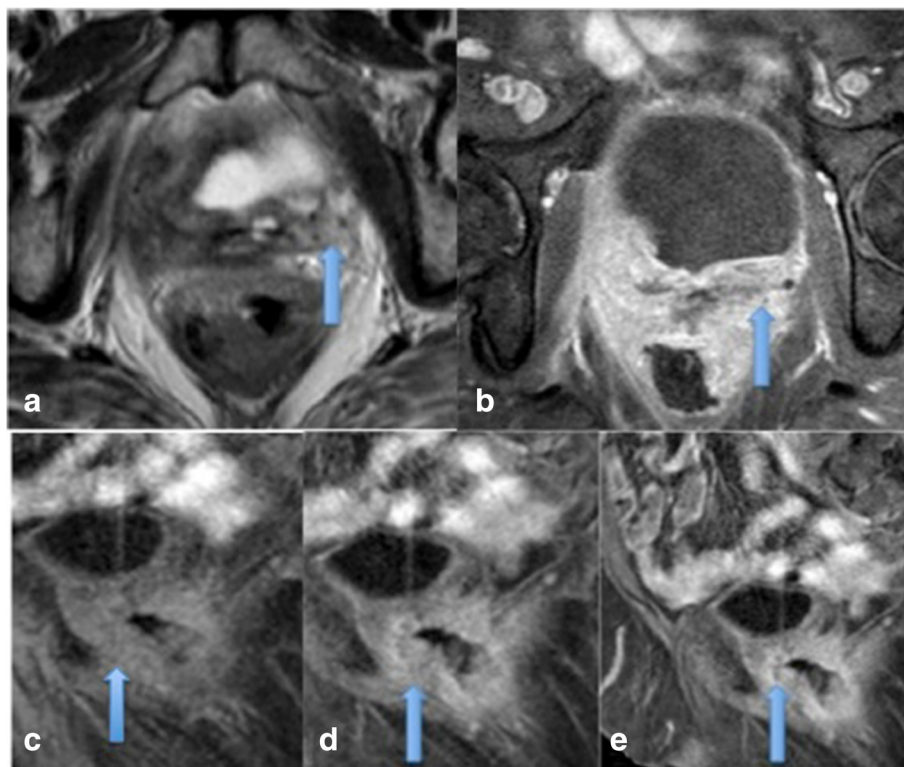


Figure 6 Recurrent disease. Recurrent mass at the left aspect of the vaginal vault after treatment for cervical cancer demonstrated on axial T2 images (a) and showing avid enhancement post contrast (b). DCE images (c-e) showing strong early contrast enhancement.

enhancement over 6 seconds reflected fibrosis and improved survival [35]. However further research into the ideal cut-off value in larger cohorts of patients is required to be of use in clinical practice.

DCE-MRI and tumour volume

Tumour size alone is an independent prognostic indicator in cervical cancer, reflected in the FIGO staging. In large cervical tumours it is thought areas of necrosis and poor vascularity contribute to tumour hypoxia and low contrast enhancement on DCE-MRI associated with poorer response to therapy. This contrasts with small highly vascular tumours which are more radiosensitive. However Mayr et al demonstrated that there was a lack of correlation between tumour volume and enhancement in intermediate sized tumours (between 4-6 cm) thought to reflect tumour heterogeneity [36]. The study found combining tumour volumetry and DCE enhancement variables help to refine the prediction of tumour response in this subgroup.

ADC as a potential biomarker of tumour response

A number of authors have shown following chemoradiation in cervical cancer the ADC value at the site of disease increases towards normal cervical ADC values, but does not reach that of normal cervical tissue, reflecting a

favourable response to treatment but not necessarily differentiating post-treatment fibrosis from residual tumour [4,37]. This is thought to be due to effects of anti-cancer therapies causing tumour lysis, increased extracellular space which allows an increase in mobility of water molecules and diffusion [4]. Limitations of the published studies includes small numbers of patients analysed, the lack of a histological gold standard and also in the study by Chen et al, the ADC values were only evaluated in the first 3 months of completion of therapy. Before DWI can be used in routine monitoring of treatment, pre treatment threshold values for ADC need to be determined. Long-term studies evaluating the change in ADC values in different post-treatment stages are required. Table 3 summarises pre and post treatment ADC values in key studies in cervical cancer.

ADC as a biomarker of early response: mid-treatment

Harry et al demonstrated that there was a statistically significant correlation between mid-treatment ADC values and eventual MR and clinical response, there was a 21% increase between the pre-treatment ADC and mid-treatment values. No correlation was found between pre-therapy, post-therapy ADC values or baseline tumour size. The authors concluded in this small study of 20 patients, that mid-treatment ADC values may be a

Table 3 Pre and post treatment ADC values in cervical cancer in key studies

Author	No	Pre-treatment ADC*	Post treatment ADC	Percentage change
Naganawa et al [37]	9	1.04 ± 0.17	1.48 ± 0.23	42%
Chen et al 2009 [4]	22	1.013 ± 0.094	1.436 ± 0.129	42%
Liu et al 2009 [38]	17	0.8 ± 0.08	1.08 ± 0.15	35%

*ADC [$\times 10^{-3}$ mm²/s].

useful surrogate biomarker of treatment response in patients with advanced cervical cancer [39].

Liu et al demonstrated two interesting findings in their study; pre-treatment ADC was lower in patients who went on to have a complete response (CR) compared to those in the partial response (PR) group. Secondly, the CR group mid-treatment ADC value increased rapidly and was higher than in the PR group supporting the fact that ADC values may predict those patients likely to be favourable responders [38]. Table 4 summaries ADC values at 3 time points in CR and PR subgroups (See Table 4) Figures 7 and 8.

On review of the literature there is considerable overlap of the ADC values obtained pre, mid and post treatment in good and bad responders. Therefore the percentage change in ADC values at different time points during treatment may be of more clinical value than absolute ADC values. For example, in the work by Liu et al, complete responders demonstrated a 56% increase in pre and mid-treatment ADC values compared to only 29% change in partial responders, whilst Harry et al demonstrated a 21% increase between pre and mid-treatment ADC values. Larger studies are required to further establish clinical useful percentage parameters.

Association of ADC with survival and recurrence

In a follow up study by Somoye et al more recently, the authors were able to show that patients who had higher median mid-treatment ADC values had improved survival rates.

They found that survivors had a higher mid-treatment ADC (1.55×10^{-3} mm²/s) than non-survivors (1.36×10^{-3} mm²/s) which is a 14% difference. They found no evidence of a difference between survivors and non-survivors for pre-treatment or post-treatment ADC-values [15].

Ovarian cancer

DCE-MRI in recurrent ovarian carcinoma

There are a small number of studies which have compared contrast enhanced MRI with second look laparotomies

and have found comparable results. In one retrospective study of 68 patients with residual or recurrent tumour, DCE-MRI had a sensitivity of 90% and specificity of 88% compared with laparotomy (sensitivity 88%, specificity 100%) [40].

The authors concluded that serial Ca-125 in conjunction with MRI is more cost-effective than second look laparotomy and is associated with less morbidity. Therefore if a surgical approach is considered a pre-operative MRI is a potentially useful tool to aid surgical planning.

There is limited published literature assessing DCE-MRI in the response to treatment but one study by Sala et al looked at multi-parametric MRI in 22 patients treated for advanced ovarian disease and found that there was no change in the DCE parameters in ovarian, peritoneal and omental disease during treatment [41].

Contrast-enhanced MRI even without DCE is sensitive in the detection of subcentimetre peritoneal and serosal deposits due to the superior contrast resolution, particularly on delayed 5 minute acquisitions [42]. A pitfall of contrast enhanced MRI is that enhancement of the peritoneum and serosa is non-specific in the context of post-treatment complications including sepsis, fistulae and intra-operative chemotherapy [40,43].

DWI in ovarian and peritoneal disease

The sensitivity of contrast enhanced CT and MRI is comparable in the detection of metastatic ovarian disease. Detection of peritoneal disease is difficult due to poor contrast resolution between disease implants and adjacent bowel and surrounding structures. Because DWI demonstrates high contrast-to-noise ratio, detection of small volume subcentimetre disease is improved. As mentioned earlier, the DWI images should always be reviewed with the ADC maps and anatomical sequences to exclude T2-shine through, for example fluid in simple cysts will be high signal on T2 images and this can ‘shine through’ onto the DWI and ADC maps, if the sequences are not reviewed together then lesions may be interpreted as having restricted diffusion (which should

Table 4 ADC values at 3 time points in CR and PR subgroups in cervical cancer

Author	No	Baseline ADC	Mid-treatment ADC	S % change	Post-treatment ADC	% change
Liu et al	15	CR 0.81 ± 0.08	1.25 ± 0.10	56%	_____	
		PR 0.93 ± 0.09	1.20 ± 0.17	29%	1.32 ± 0.23	42%

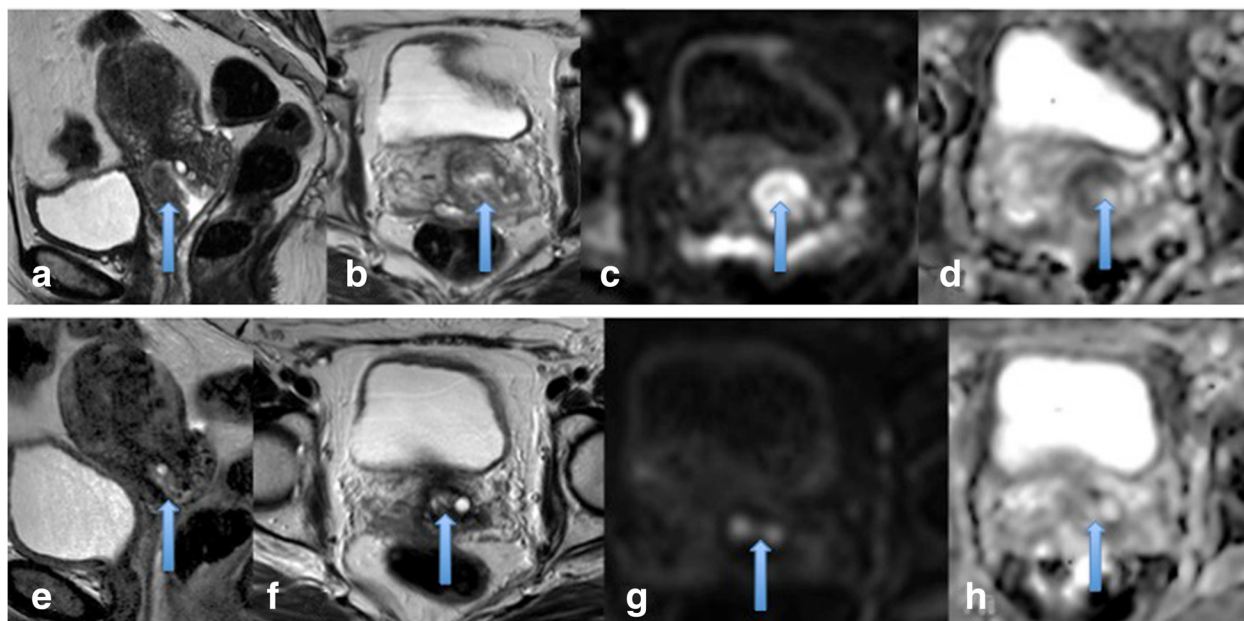


Figure 7 Cervical carcinoma showing marked restricted diffusion and good response to treatment. Pre treatment cervical cancer showing a mass on sagittal and axial T2 images (**a and b**) which demonstrated marked restricted diffusion with high signal on b1200 images (**c**) and low ADC (**d**). Post treatment, no residual mass or restricted diffusion is present consistent with a good response to treatment (**e-h**).

appear as low signal on ADC maps). Knowledge of structures which may appear bright on DWI imaging, but are not disease related is important to avoid overcalling disease, for example reactive lymph nodes and bowel mucosa which have high cellularity [6]. When combined with conventional anatomical MR sequences, DWI improves accuracy to 84-88% on a per-lesion basis, while MRI alone is 52-72% and DWI alone is 71-81%, but this has yet to be correlated with a clinical impact [44]. A study by Low et al demonstrated an increase in detection of peritoneal deposits by 21% and 29% in 169 patients using single breath-hold DWI [45].

In one small study of 42 patients with recurrent ovarian or peritoneal cancer the ADC values during chemotherapy were analyzed and the authors found that in responders, the ADC values of lesions increased after cycle 1 and 3 compared with non-responders where no parameter changed significantly. Furthermore the pre-treatment ADC were not predictive of response to treatment. The authors concluded that quantitative DW-MRI may aid early monitoring of treatment efficacy [46].

In the same study by Sala et al quoted earlier the authors found that the baseline ADC of ovarian lesions, peritoneal lesions and omental cake differed significantly suggestive of biologic heterogeneity of disease. They also found that post-treatment the ADC of ovarian lesions increased significantly in responders where as there was no change in ADC in non-responders. The authors concluded that ADC values may be useful response markers

whereas no significant change was seen in DCE or spectroscopy parameters [41].

Endometrial carcinoma

DWI-MRI in predicting recurrence

There is limited literature evaluating DWI-MRI in predicting recurrence in endometrial cancer. Multiple important prognostic factors have been documented including age, stage, histology, depth of myometrial invasion and lymph node metastases however there are no biomarkers currently available to predict prognosis [6].

One study by Nakamura et al looked at 111 patients who underwent surgery for endometrial cancer. The authors found that there was a significant correlation between pre-treatment ADC values and FIGO stage, depth of myometrial invasion, cervical involvement, lymph node metastasis, peritoneal cytology and tumour size. In particular lower ADC values were associated with grade 1 histological classification compared with grade 3, and low ADC values were associated with disease free survival compared with patients with higher pre-treatment ADC values. No association was found with overall survival, but the authors concluded low pre-operative ADC could predict which patients have a low risk of recurrent disease [47].

Future directions

A significant limitation of the current studies is the small number of patients sampled and the lack of a

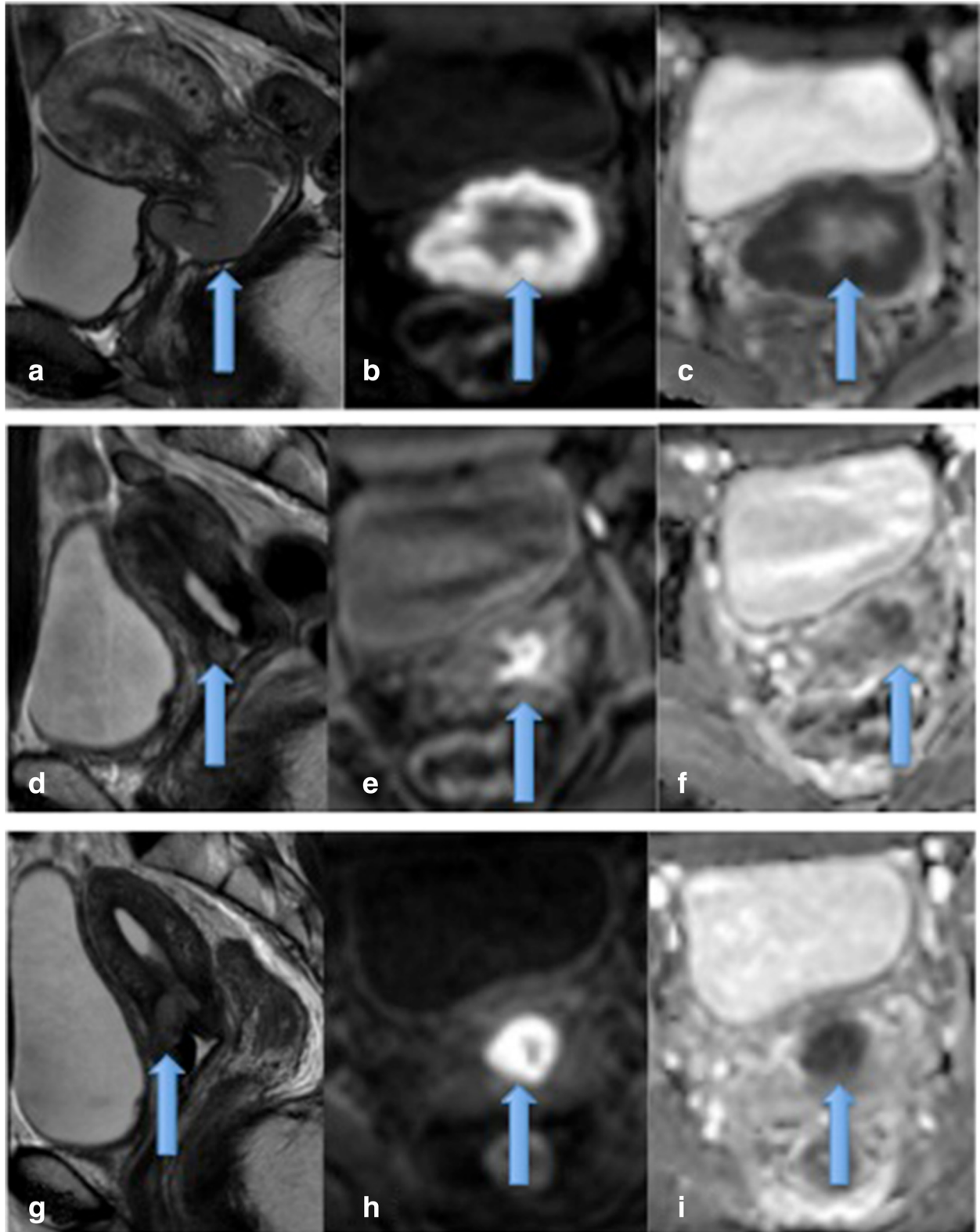


Figure 8 Residual disease post treatment. **a** demonstrates a pre-treatment large cervical mass on sagittal T2 imaging with marked restricted diffusion (**b and c**). **d** demonstrates appearances mid-treatment with residual disease on T2 imaging and restricted diffusion (**e, f**). At the end of treatment **g-i** demonstrates residual disease which has increased in size with corresponding increase in restricted diffusion.

quantitative gold standard. Although quantitative analysis is desirable and recommended in guidelines published by the National Institute of Cancer for DCE-MRI, this is labour intensive requiring MRI physicist support. ADC as a quantitative, reproducible predictive tool shows great promise but also needs standardisation of b-values between institutions and further research into identifying threshold values. Percentage change in ADC values at various treatment points may serve as a better indicator of response than absolute values. In cervical cancer long-term studies evaluating differences in ADC values in the post-therapy setting over a longer time period may help to overcome the challenge of differentiating residual disease from fibrosis. There is a lack of published data evaluating functional imaging in both recurrent endometrial and ovarian cancer. The role of whole body MRI and PET-MRI are currently limited to the research setting but these modalities may have added benefit to the assessment of pelvic gynaecological malignancy due to the exquisite combination of high resolution anatomical and functional images. Further research into the correlation of early disease detection with long term survival and disease free morbidity is required to assess the clinical utility of advanced functional imaging.

Conclusion

The majority of published data has evaluated functional MRI and cervical cancer with promising results to date. Some limited studies have shown added value of functional MRI in recurrent endometrial and ovarian cancers. Given that both DCE-MRI and DWI-MRI are non-invasive, readily accessible and without ionising radiation, there are advantages in being able use these techniques to further individualise and benefit patient care.

Competing interests

The authors declare that they have no competing interests.

Authors' contributions

AH drafted the manuscript and AS provided images and overview of manuscript. Both authors read and approved the final manuscript.

Received: 16 April 2014 Accepted: 22 January 2015

Published online: 15 March 2015

References

1. Yamashita Y, Baba T, Baba Y, Nishimura R, Ikeda S, Takahashi M, et al. Dynamic contrast-enhanced MR imaging of uterine cervical cancer: pharmacokinetic analysis with histopathologic correlation and its importance in predicting the outcome of radiation therapy. *Radiology*. 2000;216(3):803–9.
2. Punwani S. Contrast enhanced MR imaging of female pelvic cancers: established methods and emerging applications. *Eur J Radiol*. 2011;78(1):2–11.
3. UK cr. Cervical cancer: survival statistics. 2010.
4. Chen J, Zhang Y, Liang B, Yang Z. The utility of diffusion-weighted MR imaging in cervical cancer. *Eur J Radiol*. 2010;74(3):e101–6.
5. Vincens E, Balleyguier C, Rey A, Uzan C, Zareski E, Gouy S, et al. Accuracy of magnetic resonance imaging in predicting residual disease in patients treated for stage IB2/II cervical carcinoma with chemoradiation therapy: correlation of radiologic findings with surgicopathologic results. *Cancer*. 2008;113(8):2158–65.
6. Sala E, Rockall A, Rangarajan D, Kubik-Huch RA. The role of dynamic contrast-enhanced and diffusion weighted magnetic resonance imaging in the female pelvis. *Eur J Radiol*. 2010;76(3):367–85.
7. Evans T, Sany O, Pearmain P, Ganesan R, Blann A, Sundar S. Differential trends in the rising incidence of endometrial cancer by type: data from a UK population-based registry from 1994 to 2006. *Br J Cancer*. 2011;104(9):1505–10.
8. Fung-Kee-Fung M, Dodge J, Elit L, Lukka H, Chambers A, Oliver T, et al. Follow-up after primary therapy for endometrial cancer: a systematic review. *Gynecol Oncol*. 2006;101(3):520–9.
9. Jemal A, Siegel R, Ward E, Hao Y, Xu J, Thun MJ. Cancer statistics. *CA Cancer J Clin*. 2009;59(4):225–49.
10. Greenlee RT, Hill-Harmon MB, Murray T, Thun M. Cancer statistics. *CA Cancer J Clin*. 2001;51(1):15–36.
11. Gadducci A, Cosio S. Surveillance of patients after initial treatment of ovarian cancer. *Crit Rev Oncol Hematol*. 2009;71(1):43–52.
12. Kyriazi S, Kaye SB, deSouza NM. Imaging ovarian cancer and peritoneal metastases—current and emerging techniques. *Nat Rev Clin Oncol*. 2010;7(7):381–93.
13. Rustin GJ, van der Burg ME, Griffin CL, Guthrie D, Lamont A, Jayson GC, et al. Early versus delayed treatment of relapsed ovarian cancer (MRC OV05/EORTC 55955): a randomised trial. *Lancet*. 2010;376(9747):1155–63.
14. Oksefjell H, Sandstad B, Trope C. The role of secondary cytoreduction in the management of the first relapse in epithelial ovarian cancer. *Ann Oncol*. 2009;20(2):286–93.
15. Somoye G, Harry V, Semple S, Plataniotis G, Scott N, Gilbert FJ, et al. Early diffusion weighted magnetic resonance imaging can predict survival in women with locally advanced cancer of the cervix treated with combined chemo-radiation. *Eur Radiol*. 2012;22(11):2319–27.
16. Harry VN, Semple SI, Parkin DE, Gilbert FJ. Use of new imaging techniques to predict tumour response to therapy. *Lancet Oncol*. 2010;11(1):92–102.
17. Punwani S. Diffusion weighted imaging of female pelvic cancers: concepts and clinical applications. *Eur J Radiol*. 2011;78(1):21–9.
18. Harry VN. Novel imaging techniques as response biomarkers in cervical cancer. *Gynecol Oncol*. 2010;116(2):253–61.
19. Zahra MA, Tan LT, Priest AN, Graves MJ, Arends M, Crawford RA, et al. Semiquantitative and quantitative dynamic contrast-enhanced magnetic resonance imaging measurements predict radiation response in cervix cancer. *Int J Radiat Oncol Biol Phys*. 2009;74(3):766–73.
20. Zahra MA, Hollingsworth KG, Sala E, Lomas DJ, Tan LT. Dynamic contrast-enhanced MRI as a predictor of tumour response to radiotherapy. *Lancet Oncol*. 2007;8(1):63–74.
21. Mayr NA, Yuh WT, Magnotta VA, Ehrhardt JC, Wheeler JA, Sorosky JJ, et al. Tumor perfusion studies using fast magnetic resonance imaging technique in advanced cervical cancer: a new noninvasive predictive assay. *Int J Radiat Oncol Biol Phys*. 1996;36(3):623–33.
22. Bernardin L, Dilks P, Liyanage S, Miquel ME, Sahdev A, Rockall A. Effectiveness of semi-quantitative multiphase dynamic contrast-enhanced MRI as a predictor of malignancy in complex adnexal masses: radiological and pathological correlation. *Eur Radiol*. 2012;22(4):880–90.
23. Institute NC. Imaging Guidelines for Clinical Trials; Dynamic contrast MRI (DCE-MRI) guidelines resulted from the NCI CIP MR Workshop on Translational Research in Cancer - Tumor Response, Bethesda, MD, November 22-23, 2004. 2004.
24. Kuang F, Ren J, Zhong Q, Liyuan F, Huan Y, Chen Z. The value of apparent diffusion coefficient in the assessment of cervical cancer. *Eur Radiol*. 2013;23(4):1050–8.
25. Namimoto T, Awai K, Nakaura T, Yanaga Y, Hirai T, Yamashita Y. Role of diffusion-weighted imaging in the diagnosis of gynecological diseases. *Eur Radiol*. 2009;19(3):745–60.
26. Cao K, Gao M, Sun YS, Li YL, Sun Y, Gao YN, et al. Apparent diffusion coefficient of diffusion weighted MRI in endometrial carcinoma—Relationship with local invasiveness. *Eur J Radiol*. 2012;81(8):1926–30.
27. Kwee TC, Takahara T, Koh DM, Nijvelstein RA, Luijten PR. Comparison and reproducibility of ADC measurements in breathhold, respiratory triggered, and free-breathing diffusion-weighted MR imaging of the liver. *J Magn Reson Imaging*. 2008;28(5):1141–8.
28. Kim SY, Lee SS, Byun JH, Park SH, Kim JK, Park B, et al. Malignant hepatic tumors: short-term reproducibility of apparent diffusion coefficients with breath-hold and respiratory-triggered diffusion-weighted MR imaging. *Radiology*. 2010;255(3):815–23.
29. Theilmann RJ, Borders R, Trouard TP, Xia G, Outwater E, Ranger-Moore J, et al. Changes in water mobility measured by diffusion MRI predict response of metastatic breast cancer to chemotherapy. *Neoplasia*. 2004;6(6):831–7.

30. Padhani AR, Liu G, Koh DM, Chenevert TL, Thoeny HC, Takahara T, et al. Diffusion-weighted magnetic resonance imaging as a cancer biomarker: consensus and recommendations. *Neoplasia*. 2009;11(2):102–25.
31. Mayr NA, Wang JZ, Zhang D, Grecula JC, Lo SS, Jaroura D, et al. Longitudinal changes in tumor perfusion pattern during the radiation therapy course and its clinical impact in cervical cancer. *Int J Radiat Oncol Biol Phys*. 2010;77(2):502–8.
32. Yuh WT, Mayr NA, Jarjoura D, Wu D, Grecula JC, Lo SS, et al. Predicting control of primary tumor and survival by DCE MRI during early therapy in cervical cancer. *Invest Radiol*. 2009;44(6):343–50.
33. Gong QY, Brunt JN, Romaniuk CS, Oakley JP, Tan LT, Roberts N, et al. Contrast enhanced dynamic MRI of cervical carcinoma during radiotherapy: early prediction of tumour regression rate. *Br J Radiol*. 1999;72(864):1177–84.
34. Hawnaur JM, Zhu XP, Hutchinson CE. Quantitative dynamic contrast enhanced MRI of recurrent pelvic masses in patients treated for cancer. *Br J Radiol*. 1998;71(851):1136–42.
35. Boss EA, Massuger LF, Pop LA, Verhoef LC, Huisman HJ, Boonstra H, et al. Post-radiotherapy contrast enhancement changes in fast dynamic MRI of cervical carcinoma. *J Magn Reson Imaging*. 2001;13(4):600–6.
36. Mayr NA, Yuh WT, Zheng J, Ehrhardt JC, Magnotta VA, Sorosky JI, et al. Prediction of tumor control in patients with cervical cancer: analysis of combined volume and dynamic enhancement pattern by MR imaging. *AJR Am J Roentgenol*. 1998;170(1):177–82.
37. Naganawa S, Sato C, Kumada H, Ishigaki T, Miura S, Takizawa O. Apparent diffusion coefficient in cervical cancer of the uterus: comparison with the normal uterine cervix. *Eur Radiol*. 2005;15(1):71–8.
38. Liu Y, Bai R, Sun H, Liu H, Zhao X, Li Y. Diffusion-weighted imaging in predicting and monitoring the response of uterine cervical cancer to combined chemoradiation. *Clin Radiol*. 2009;64(11):1067–74.
39. Harry VN, Semple SI, Gilbert FJ, Parkin DE. Diffusion-weighted magnetic resonance imaging in the early detection of response to chemoradiation in cervical cancer. *Gynecol Oncol*. 2008;111(2):213–20.
40. Low RN, Duggan B, Barone RM, Saleh F, Song SY. Treated ovarian cancer: MR imaging, laparotomy reassessment, and serum CA-125 values compared with clinical outcome at 1 year. *Radiology*. 2005;235(3):918–26.
41. Sala E, Kataoka MY, Priest AN, Gill AB, McLean MA, Joubert I, et al. Advanced ovarian cancer: multiparametric MR imaging demonstrates response- and metastasis-specific effects. *Radiology*. 2012;263(1):149–59.
42. Low RN, Saleh F, Song SY, Shifan TA, Barone RM, Lacey CG, et al. Treated ovarian cancer: comparison of MR imaging with serum CA-125 level and physical examination—a longitudinal study. *Radiology*. 1999;211(2):519–28.
43. Ricke J, Sehouli J, Hach C, Hanninen EL, Lichtenegger W, Felix R. Prospective evaluation of contrast-enhanced MRI in the depiction of peritoneal spread in primary or recurrent ovarian cancer. *Eur Radiol*. 2003;13(5):943–9.
44. Low RN, Sebrechts CP, Barone RM, Muller W. Diffusion-weighted MRI of peritoneal tumors: comparison with conventional MRI and surgical and histopathologic findings—a feasibility study. *AJR Am J Roentgenol*. 2009;193(2):461–70.
45. Low RN, Gurney J. Diffusion-weighted MRI (DWI) in the oncology patient: value of breathhold DWI compared to unenhanced and gadolinium-enhanced MRI. *J Magn Reson Imaging*. 2007;25(4):848–58.
46. Kyriazi S, Collins DJ, Messiou C, Pennert K, Davidson RL, Giles SL, et al. Metastatic ovarian and primary peritoneal cancer: assessing chemotherapy response with diffusion-weighted MR imaging—value of histogram analysis of apparent diffusion coefficients. *Radiology*. 2011;261(1):182–92.
47. Nakamura K, Imafuku N, Nishida T, Niwa I, Joja I, Hongo A, et al. Measurement of the minimum apparent diffusion coefficient (ADC_{min}) of the primary tumor and CA125 are predictive of disease recurrence for patients with endometrial cancer. *Gynecol Oncol*. 2012;124(2):335–9.

Submit your next manuscript to BioMed Central and take full advantage of:

- Convenient online submission
- Thorough peer review
- No space constraints or color figure charges
- Immediate publication on acceptance
- Inclusion in PubMed, CAS, Scopus and Google Scholar
- Research which is freely available for redistribution

Submit your manuscript at
www.biomedcentral.com/submit

